

Nick Stanford
Sales & Development Manager ANZ

The Future of Red Meat Processing

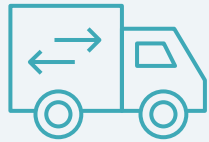


LEAP4Beef - Scott, AMPC & Industry partners

Scott Protein Sector



We automate meat processing steps with precision robotics, focusing on safety, yield, and labour efficiency.



Our MHL systems offer further solutions to support the entire value chain



Livestock

Transport

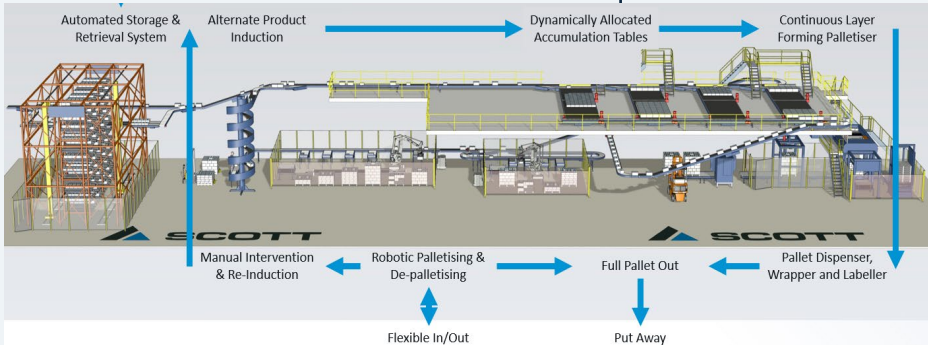
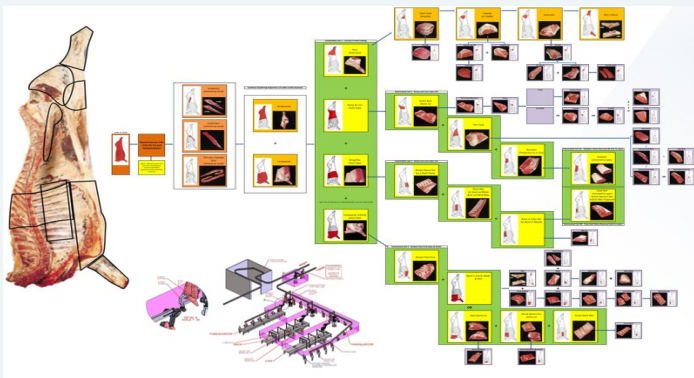
Primary processing

Secondary processing

Packaging

Handling & Logistics

Point of sale



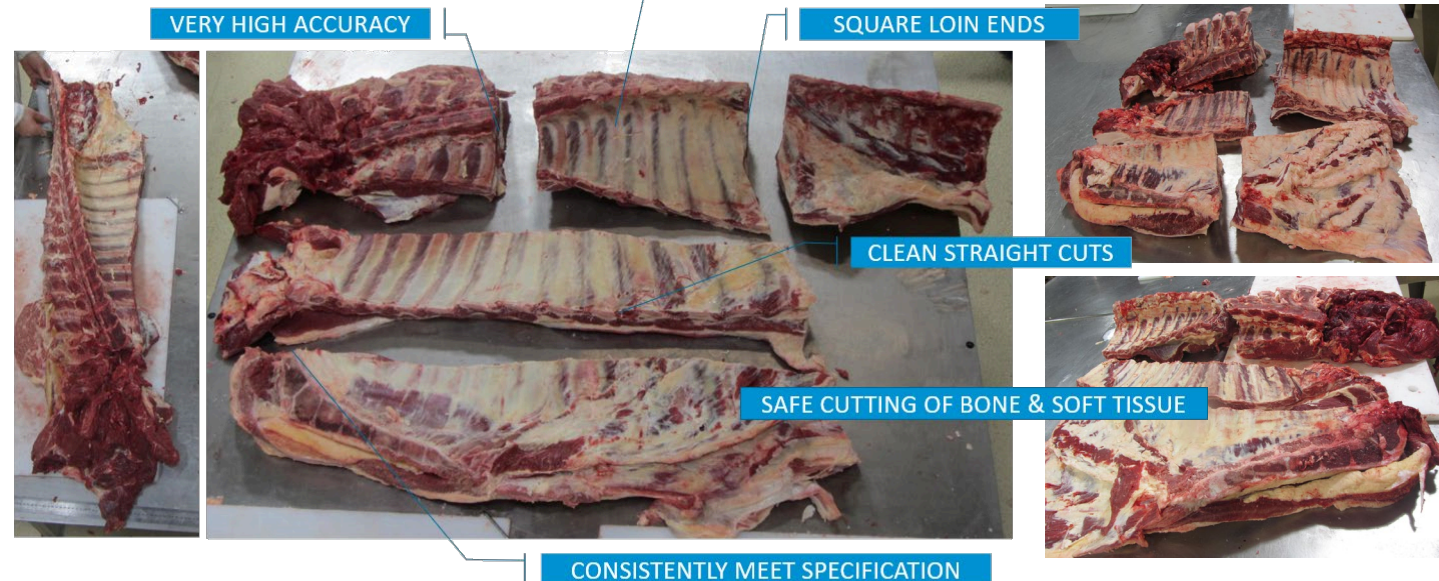
Q1 - LEAP and LEAP4Beef Strategic developments success and challenges

Success with Lamb LEAP carcass cutting, deboning and packing

- Strategic module development targeting high value modules.
- Total end-to-end solution
 - Maximum (yield) carcass value**
 - Maximum efficiency**
 - Eliminate labour related issues**
 - Quality and consistency**
- Scalable for broader processor appeal. Pathways to grow a processing business.
- Robust equipment in operation for >15 years.

Expected success & challenges with LEAP4Beef carcass cutting, deboning and packing.

More benefit. Similar & different challenges

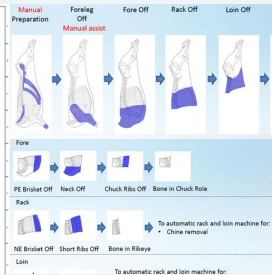
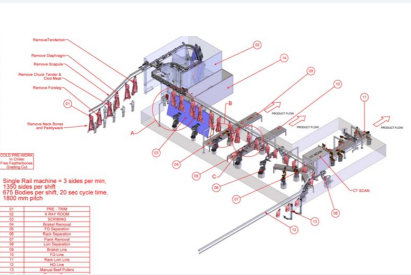
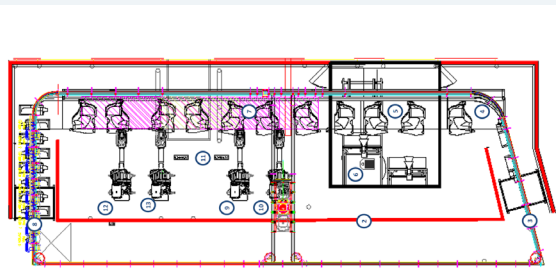
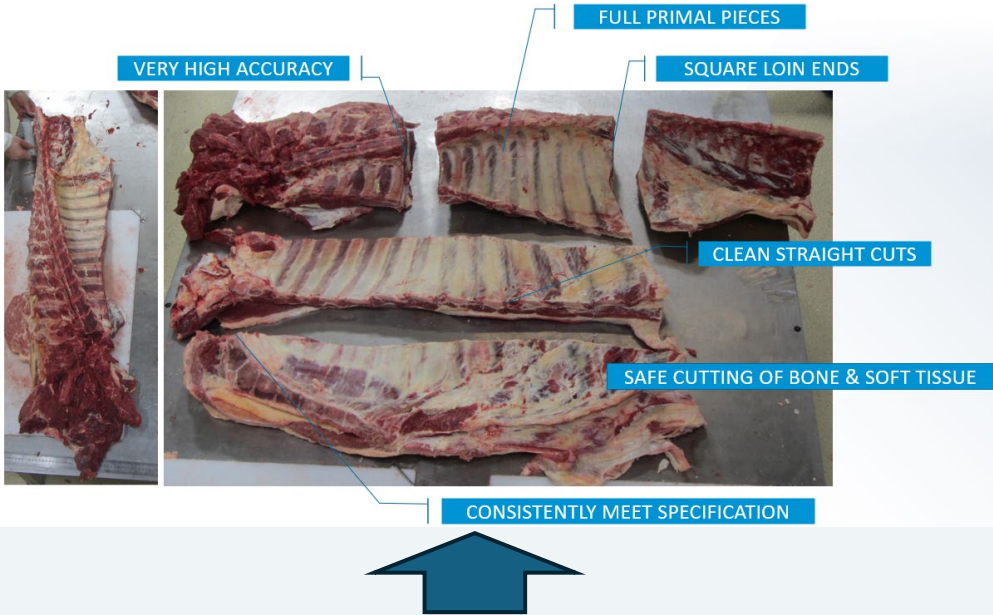


Q2 - LEAP4Beef development value proposition

First 4 modules (underway)

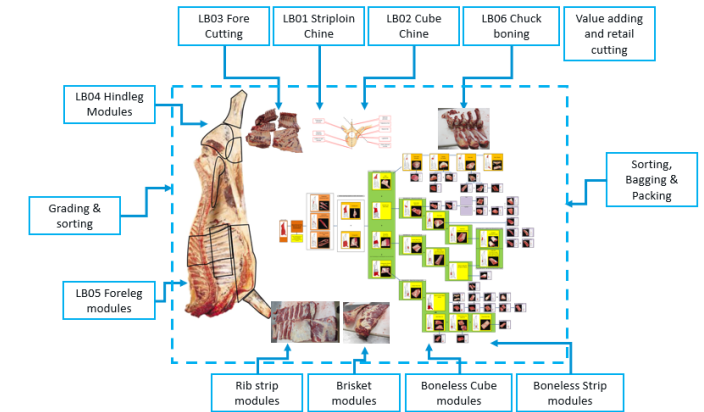
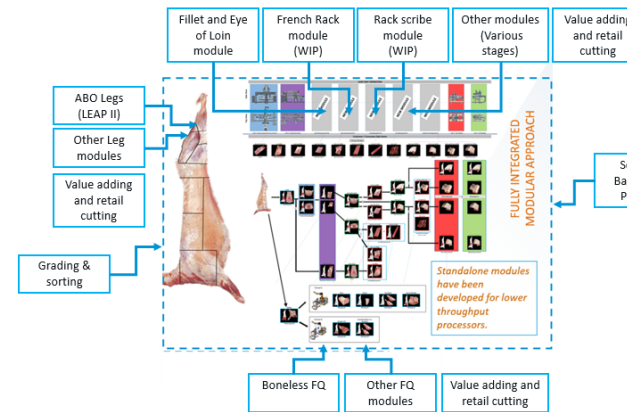
First 4 modules
\$6,459,600 pa
benefit for
mid size processor.

Focus cuts demonstrated
\$27+ / head benefit in
carcase value alone



Q3 - Outlook and timeframe for development(s)

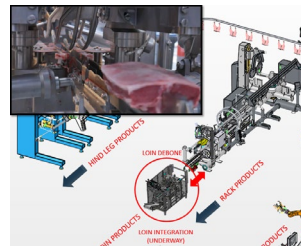
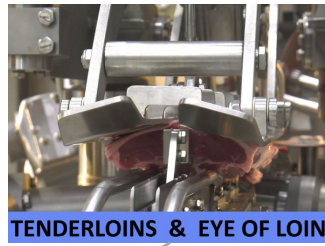
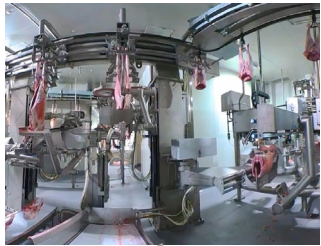
- **First in plant concept prototype completed**
- **First modules commercial in 12-14 months**
- **Additional 2-3 modules over 24-36 months**
- **Continued modular development**



2025

AMPC (& MLA/AMPC) development – timeframes

2027



2025

2026

2027





scottautomation.com