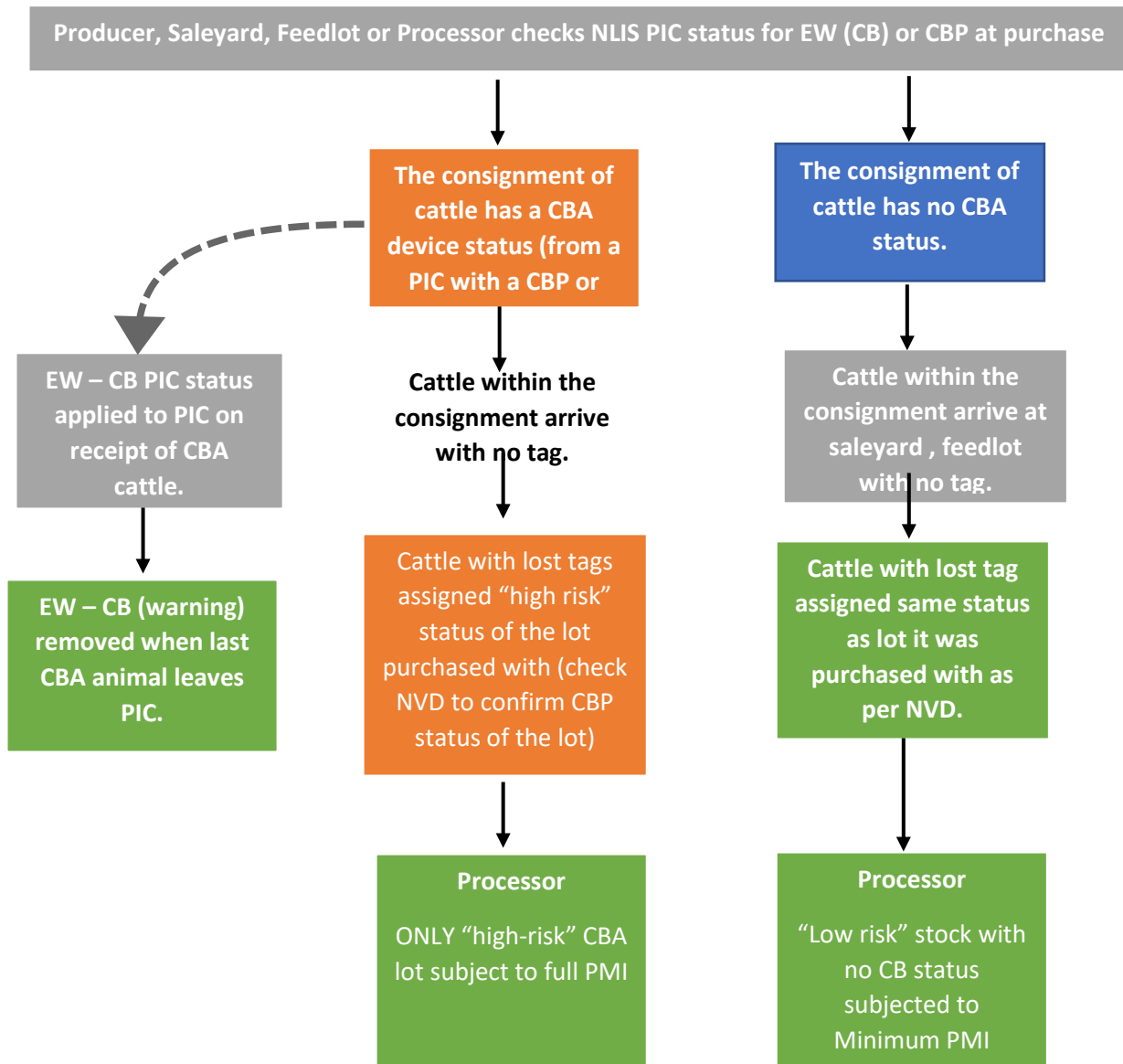


Cattle with *Cysticercus bovis* (CB) device status and lost tags



Legend

PIC = Property Identification Code,
NVD = National Vendor Declaration,
NLIS = National Livestock Identification System.
Low risk PIC/cattle – cattle that have had no exposure to CB (via recycled water containing human effluent).
High risk PIC/cattle – cattle that may have had exposure to CB (via recycled water containing human effluent) – AS4696:2023.
CBA status – under new risk management arrangements (AS4696:2023) these will be stock that may have been exposed to CB. PIC will have CBP status and animals will have Device Based (DB) Status on NLIS.
CBA – Device based animal status (tag).
CBP – CB PIC based status on NVD form.
 EW – CB warning on NLIS data base to flag PIC, EW = Early warning, CB = *Cysticercus bovis*

Post-mortem Inspection (PMI) options (AS4696:2023)

Minimum PMI – Incise heart, observe masseters.
Full PMI – All animals with CB device status require post-mortem inspection specific to detect *C. bovis* with incision of heart and masseter muscles, tongue and diaphragm and observe all exposed muscles.